

WEISS WORLD. PRESS INFORMATION.



INSPIRING PEOPLE
GREAT SOLUTIONS

Date Buchen, Germany, 18 October 2023

+++ **Freely Programmable Rotary Indexing Table for Large Workpieces** +++

With the new size 560 in its CR-N rotary indexing table series, WEISS enables plant manufacturers to design their assembly lines with even greater precision. The compact indexer with a very small footprint ensures short rotation times and a long service life.

In car body manufacturing and battery production, the automotive industry is the field that especially depends on the reliable powerhouses. The new and therefore fifth generation of the CR series is around 20 percent more compact at the same level of performance. Machine tool layouts benefit from the small footprint of WEISS rotary indexing tables. Across a range of sizes, these rotary indexing tables have one thing in common: their height of 265 millimeters. As a result, no compensating elements or elaborate adjustments are required when assembly lines are modified. This property makes the freely programmable CR-N particularly interesting for large series or flow manufacturing.

Thanks to their high degree of accuracy, the freely programmable rotary indexing tables are also used in measuring machines and for the visual inspection of parts for example. In the 2-stage design of the high-precision version of the CR-N 560, the indexing precision is an outstanding 20 and the repeat accuracy is as high as +/-9 arc seconds. The dynamic version is designed for a maximum acceleration torque of 7,100 Newton meters for short rotation times and high dynamics. The max. dynamic axial force is 51,500 N – thanks to a newly developed bearing concept with high-precision, heavy-duty needle bearings. With ten gear stages, users can select the most efficient combination of motor and controller for the respective application. Five different motor installation positions enable high flexibility when it comes to plant design. A large center opening of 185 millimeters provides enough space and clearance for the power and sensor cables of other attachments.

Like all the freely programmable rotary indexing tables in the CR-N series, size 560 is particularly robust and can be used for multiple production cycles. The low-maintenance and compact design ensures that plant manufacturers and operators have the required flexibility.

WEISS GmbH

Siemensstraße 17

74722 Buchen

Germany

Phone +49 6281 52 08 0

Telefax +49 6281 52 08 99

E-Mail info@weiss-world.com

weiss-world.com

Press Contact

Sonja AUFRECHT,

Senior Marketing & Communications Manager

E-Mail sonja.aufrecht@weiss-world.com

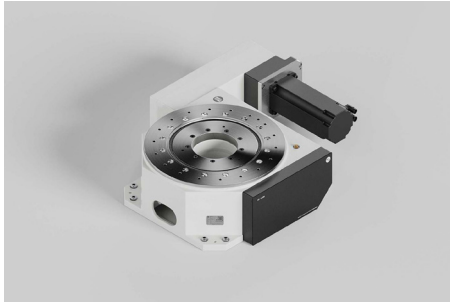
Phone +49 6281 52 08 6276

WEISS WORLD. PRESS INFORMATION.

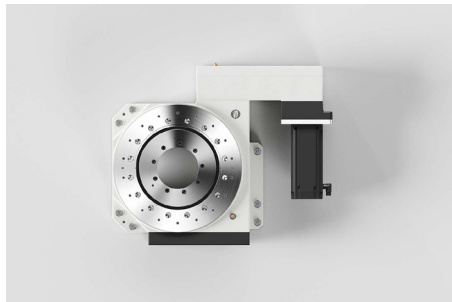


INSPIRING PEOPLE
GREAT SOLUTIONS

Image Captions



WEISS expands its product portfolio with the freely programmable CR-N 560 rotary indexing table, expanding the options for plant manufacturers in turn.



WEISS GmbH

Siemensstraße 17

74 722 Buchen

Germany

Phone +49 6281 52 08 0

Telefax +49 6281 52 08 99

E-Mail info@weiss-world.com

weiss-world.com

Press Contact

Sonja AUFRECHT,

Senior Marketing & Communications Manager

E-Mail sonja.aufrecht@weiss-world.com

Phone +49 6281 52 08 6276

WEISS WORLD. PRESS INFORMATION.



INSPIRING PEOPLE
GREAT SOLUTIONS

About WEISS

With its automation solutions, WEISS GmbH is one of the world's leading system suppliers in the automotive industry, machine and plant manufacturing, life science, and electronics. The reliable and durable rotary indexing tables, handling units, delta robots, and linear transfer systems are making the industrial production of tomorrow a reality. With its expertise in mechanical, mechatronic, and digital solutions, WEISS paves the way for industrial transformation. By applying their engineering expertise, knowledge of industries and processes, and high affinity for serving customers, the experts assist system integrators and producers in designing and operating innovative and sustainable production plants. The family-owned company with headquarters in the city of Buchen in Germany's Rhine-Neckar metropolitan area, operates on a global scale. Founded in 1967, WEISS now has a staff of around 700 employees in its sales, service, and manufacturing locations in 49 countries.

Social Media. Follow us.

LinkedIn	https://www.linkedin.com/company/weiss-world
Xing	https://www.xing.com/pages/weissgmbh
Facebook	https://www.facebook.com/WEISS.HQ
Instagram	https://www.instagram.com/karrierebeiweiss

WEISS GmbH

Siemensstraße 17

74 722 Buchen

Germany

Phone +49 6281 52 08 0

Telefax +49 6281 52 08 99

E-Mail info@weiss-world.com

weiss-world.com

Press Contact

Sonja AUFRECHT,

Senior Marketing & Communications Manager

E-Mail sonja.aufrecht@weiss-world.com

Phone +49 6281 52 08 6276