



INSPIRING PEOPLE
GREAT SOLUTIONS

ROTARY INDEXING TABLE CONTROLLERS





INSPIRING PEOPLE
GREAT SOLUTIONS

CONTROLLERS FOR FIXED-CYCLE ROTARY INDEXING TABLES

- » SAVE TIME DURING COMMISSIONING
- » OPTIMIZATION FEATURE FOR BEST POSSIBLE CYCLE TIMES
- » MORE PLANNING RELIABILITY DUE TO EXTENDED WARRANTY TIME FOR ROTARY INDEXING TABLE TC
- » DEFINED INTERFACE TO MACHINE CONTROLLER WHICH CONTAINS ALL RELEVANT SIGNALS
- » CAN BE OPERATED INDEPENDENT OF THE MACHINE CONTROLLER – DIRECTLY ON THE DEVICE OR SIMPLY USING THE WEB-BASED USER INTERFACE



INSPIRING PEOPLE
GREAT SOLUTIONS

CONTROLLERS FOR FIXED-CYCLE WEISS ROTARY INDEXING TABLES

TS005 INDEXER MODULE

The cost-effective variant for fast commissioning – a proven, long-standing solution that is perfectly coordinated and continuously optimized.



Benefits

- › Easy integration into the customer's SPS
- › Diagnostic options for higher efficiency
- › Space-saving installation
- › Graphical display for operating convenience and guided commissioning

EF2 ROTARY INDEXING TABLE CONTROLLER

Rotary indexing table, controller and web-based software from one source - an optimal combination.



Benefits

- › Intuitive web-based user interface
- › Fast and easy commissioning
- › Cam gear & segment detector for optimized pre- and post-control of processes

EF3 ROTARY INDEXING TABLE CONTROLLER

Seamless interaction of rotary indexing table and powerful controller from the same source.

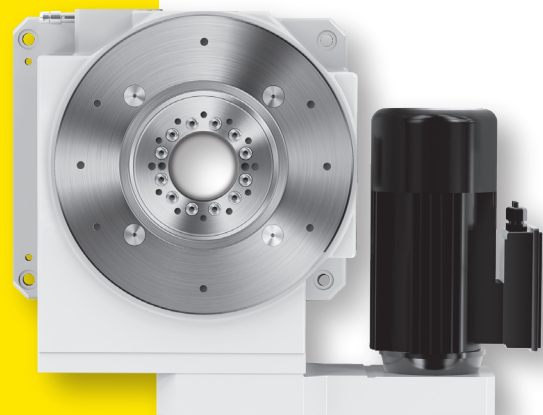


Benefits

- › Easy to program using preset parameters
- › Easy to operate directly on the device via keypad or web-based user interface
- › Rapid error analysis via cumulated error display
- › Compact and slim design saves space in control cabinet
- › Successor product to EF1 and EF2 rotary indexing table controller

Controllers for WEISS rotary indexing tables ...

- › are perfectly coordinated to electromagnetic rotary indexing tables
- › promote a long system service life, since there is less brake wear and soft start after e-stop, even from intermediate positions
- › control brakes directly from the WEISS controller, no additional relay required
- › feature optimization options right on the device or on the user interface
- › can be used globally via various web standards
- › compact hardware (all in one)





INSPIRING PEOPLE
GREAT SOLUTIONS

COMPARISON OF ROTARY INDEXING TABLE CONTROLLERS

PERFORMANCE CHARACTERISTICS	Indexer Module TS005	Rotary indexing table controller EF2 ⁵	Rotary indexing table controller EF3	Contactor control	Standard frequency converter
Platform	Control card (logic)	Servo controller, PLC	Servo controller, PLC	Power contactor	Frequency converter
Performance classes	External power contactor necessary	0.37 kW 1.5 kW 2.2 kW 3.0 kW	0.75 kW 2.2 kW 4.0 kW	Depending on the motor of the WEISS rotary indexing table	Depending on the motor of the WEISS rotary indexing table
Communication interface	24 V DC digital I/O	24 V DC digital I/O, Profibus, Profinet	24V DC digital I/O, Profinet (in announcement for 2025), EtherCAT	Programming in machine controller	Programming in machine controller (depending on manufacturer)
Safety feature	Not available	STO SIL 2 on board, STO SIL 3 with additional circuit	STO SIL 3 on board, SS1-t with additional circuit	Designed by user based on specifications for respective application	Designed by user based on specifications for respective application
Operability	LED display & control buttons, LED Stripe	Web-based user interface	Display/keypad, web-based user interface	Not available	Not available
Front panel installation	Not available	Not available	Optional	Not available	Not available
Space requirements, dimensions (width/height/depth)	108/96/61 mm	0.37 kW to 2.2 kW 90/283/285 mm, 3.0 kW 100/288/300 mm	0.75 kW to 4.0 kW 60/323/210 mm	Depending on manufacturer	Depending on manufacturer, comparable
BENEFITS					
Parametrization in just a few steps, saves time during commissioning	●	●	●	○	○
No controller knowledge required	●	●	●	○	○
Web-based operation, integrated web server	○	●	●	○	○
Remote support & diagnosis options	● ¹	● ²	● ^{1,2}	○	○
Increased performance via fully automatic optimization cycle	○	●	●	○	○
Wear-free switching of motor & brake coil via semi-conductor relay	●	●	●	○ ³	● ⁴
Energy saving mode	○	●	●	○	● ⁴
5 year warranty on TC rotary indexing table	○	●	●	○	○
POSSIBLE USES					
Very many time-critical cycles / year (> 2 million) with high dynamics	○	●	●	○	●
Very few non-time-critical cycles / day with very long pause times	●	●	●	●	●

¹ via telephone, ² via TeamViewer, ³ increased wear on contactor, increased risk of failure and increased maintenance costs, ⁴ possible depending on manufacturer, ⁵ discontinued product



INSPIRING PEOPLE
GREAT SOLUTIONS

WEISS GMBH

Siemensstraße 17
74722 Buchen
Germany

Phone +49 6281 5208-0
info@weiss-world.com
www.weiss-world.com